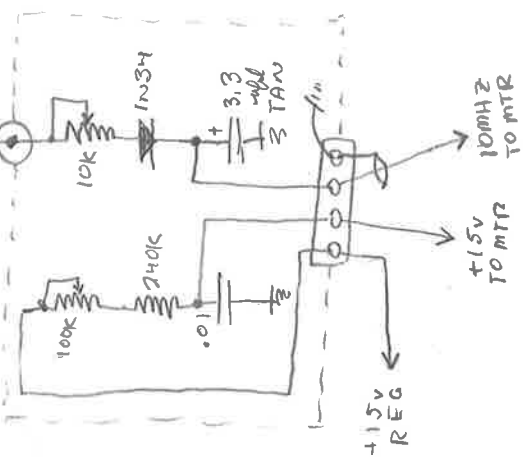


OUTPUT (dbm)	
5 MHz	-65
10 MHz	+13.8
15 MHz	*
20 MHz	-37
30 MHz	-33

OUTPUT (dbm)	
5 MHz	-75
10 MHz	+3.8
15 MHz	*
20 MHz	-43
30 MHz	-44



\*UNREADABLE  
 - UNUSED OUTPUTS MUST BE TERMINATED  
 - IN 50Ω FOR OPTIMUM PERFORMANCE  
 - PWR SPLITTER INSERTION LOSS -10db

OUTPUT  
 FINAL BUILD  
 JULY 12, 2012